

AND NO ONE FISH IN THE MIDDLE

**MFA THESIS EXHIBITION
MAY 6-JUN 12, 2016**

OPENING RECEPTION:
FRI, MAY 6, 6-8PM

LOGAN CENTER GALLERY
+ OTHER LOCATIONS

JOSHUA BACKUS

BRIT BARTON

ELISABETH HOGEMAN

JAYSON KELLOGG

DEVIN MAYS

GABRIEL MORENO

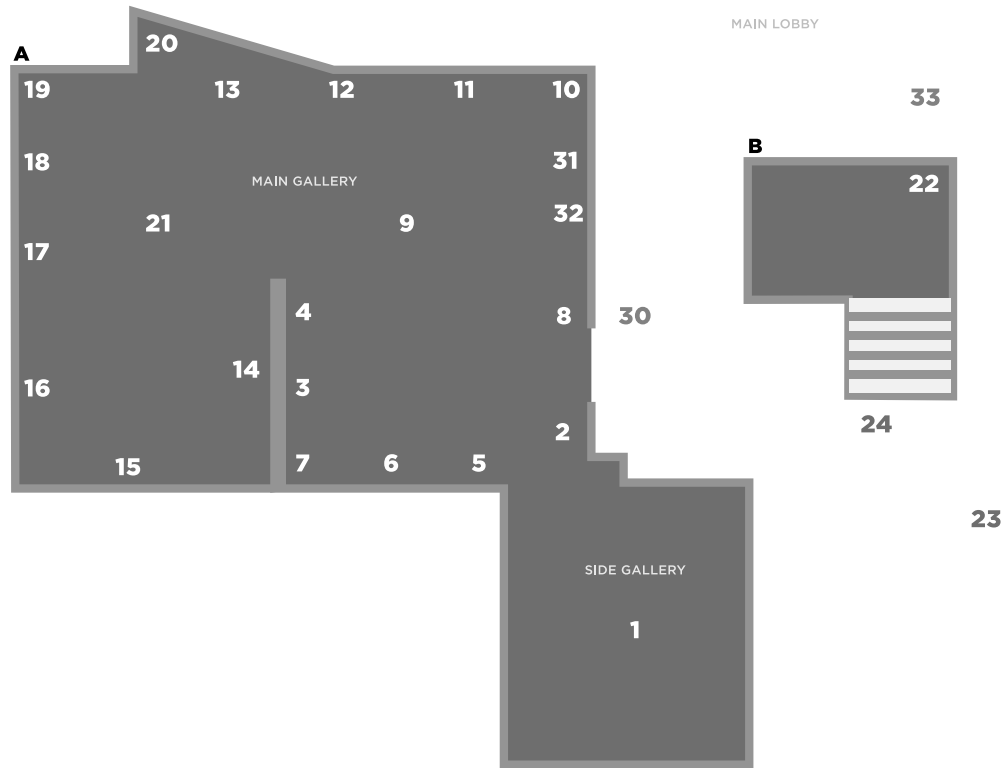
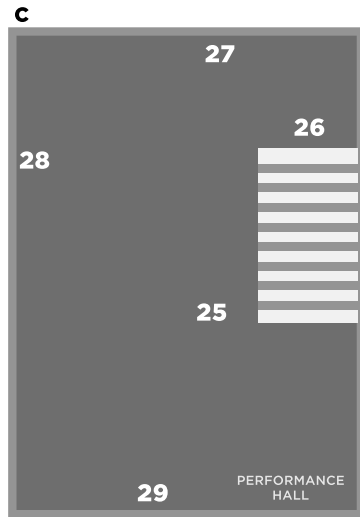
ANNA SHOWERS-CRUSER

MORGANNE WAKEFIELD



MFA Exhibition Map

- A** LOGAN CENTER GALLERY
- B** STAIR LANDING BETWEEN LOBBY AND LOWER LEVEL
- C** GIDWITZ LOBBY



ELEVATORS TO 2ND FLOOR*

- | | | | | |
|--|---|--|--|---|
| <p>1. Morganne Wakefield, <i>I See Patagonia In Your Future</i>
Digital video
14:38 minutes
2016</p> <p>2. Anna Showers-Cruser, <i>Making Room for an Asterisk</i>
Fabric remnants, cast silicone, pigment, rope, steel, honor society chain from 2007, hand-felted wool, human and synthetic hair, synthetic eyelashes, chain, latex, lights
Site-specific installation
2016</p> <p>3. Devin Mays, <i>New port</i>
Newport box
2016</p> <p>4. Gabriel Moreno, <i>Ab-used</i>
Steel from posterior of Admiral fridge
2016</p> <p>5. Joshua Backus, <i>Map</i>
Oil and enamel on MDF panel
20" x 24"
2016</p> <p>6. Joshua Backus, <i>Mine</i>
Acrylic on MDF panel
20" x 24"
2015</p> <p>7. Morganne Wakefield, <i>Sagging Granite</i>
Fabric, digital photo, sand
Dimensions variable
2015</p> | <p>8. Gabriel Moreno, <i>Matchpoint</i>
Refrigerator doors and side, hinges, roofing tar, match, cement
2016</p> <p>9. Gabriel Moreno, <i>Admiral Fridge, Stripped</i>
Refrigerator w/o steel coat, extension cord, aluminum foil, tape
2016</p> <p>10. Brit Barton, <i>Making Noise</i>
Audio installation
Dimensions variable
2016</p> <p>11. Anna Showers-Cruser, <i>Drawings for Furs & Ordinaries</i>
Ink and mixed media on paper
Each 14" x 16"
2015-16</p> <p>12. Jayson Kellogg, <i>Recalling The Next Attack</i>
HD video, color, sound
4:16 minutes
2015</p> <p>13. Joshua Backus, <i>Step</i>
Oil and enamel on MDF panel
24" x 24"
2016</p> <p>14. Brit Barton, <i>Making Knots</i>
HD video
40 minutes, on loop
2016</p> <p>15. Devin Mays, <i>Mascot(s)</i>
Plastic, framed picture
2015</p> | <p>16. Gabriel Moreno, <i>Sarcophagus</i>
Plaster, lamp cord, light bulb, cement
2015</p> <p>17. Joshua Backus, <i>Calibration 1 (Logan Center)</i>
Oil and enamel on MDF panel, acrylic, enamel, tape
2016</p> <p>18. Jayson Kellogg, <i>Camaraderie</i>
SD video, color, sound
2:21 minutes
2014</p> <p>19. Brit Barton, <i>See the corner, the curtain</i>
Multimedia
Site specific installation
2016</p> <p>20. Devin Mays, <i>Let It Shine</i>
HD video
7:43 minutes
2015</p> <p>21. Morganne Wakefield, <i>Little Frontier</i>
Fake grass, fabric, sand, hula hoop, paint
28" x 28"
2015</p> <p>22. Gabriel Moreno, <i>The Current Exchange, No. 3</i>
Refrigerators, selected images, butter, freeze pops, light bulbs, cement, aluminum
Lobby-to-basement landing installation
2016</p> | <p>23. Elisabeth Hogeman, <i>And You the Bell</i>
HD video
2016</p> <p>24. Anna Showers-Cruser, <i>Pardon Our Reach</i>
Fabric remnants, vinyl, steel, latex, colored pencil, concrete, fake fur, screen borrowed from NG, digital video
90" x 40" x 40"
2015-16</p> <p>25. Anna Showers-Cruser, <i>Ate Raw Lemons and Black Leather</i>
Steel, concrete, vinyl, pigment, parachute cord, silicone rubber, metal rivets, glow bracelet JB brought back from San Francisco, synthetic and human hair and eyelashes, Vaseline, thread
Dimensions variable
2016</p> <p>26. Anna Showers-Cruser, <i>Woulda-Shoulda-Coulda</i>
Concrete, enamel, fabric remnants, zippers, beads, lubricant samples collected from 8 months of therapy visits, steel, parachute cord
Dimensions variable
2016</p> <p>27. Elisabeth Hogeman, <i>Previews and trailer for And You the Bell</i>
HD video
2016</p> <p>28. Elisabeth Hogeman, <i>Previews and trailer for And You the Bell</i>
HD video
2016</p> | <p>29. Elisabeth Hogeman, <i>Previews and trailer for And You the Bell</i>
HD video
2016</p> <p>30. Brit Barton, <i>Mezzanine</i>
Velvet curtain
Site specific installation
2016</p> <p>31. Devin Mays, <i>New port</i>
Newport box
2016</p> <p>32. Morganne Wakefield, <i>Screen Test</i>
Fabric, india ink, paper
29" x 27"
2015</p> <p>33. Anna Showers-Cruser, <i>Gonfalon for a Femme, Between</i>
70" x 40" x 24"
Pigment, glitter, gauze, plaster, fabric remnants, sand, vinyl-cast concrete, steel, tar gel, synthetic eyelashes, tape, foam
2015</p> <p>34. Morganne Wakefield, <i>#ss16</i>
Fabric, digital photo, sand
Dimensions variable
2015</p> |
|--|---|--|--|---|